

NORTHWEST FLORIDA WATER MANAGEMENT DISTRICT

REQUEST FOR QUOTES

DEBRIS REDUCTION AND REMOVAL

CONTRACTUAL SERVICES FOR RECOVERY EFFORTS AND DEBRIS REDUCTION CLEARANCE SERVICES
FROM PRE-QUALIFIED VENDORS AWARDED CONTRACTS VIA REQUEST FOR PROPOSAL 20-001

OVERVIEW

This Request for Quotes (RFQ) is for recovery efforts and debris reduction clearance services (debris services) in accordance with NFWFMD Request for Proposals (RFP) 20-001 and the Agreements that resulted from RFP 20-001. The pre-qualified contractors selected through RFP 20-001 are the only entities permitted to submit a quote in response to this RFQ.

The specified Work involves debris reduction/mulching and/or debris removal services on nine units totaling approximately 703 acres, to be completed by **March 31, 2025**.

Unit 1 is located in Liberty County on the Apalachicola River Water Management Area. Units 2-9 are located in Bay, Jackson and Washington counties on the Econfina Creek Water Management Area.

Work will be awarded to Contractors by Task Order (TO), a draft copy of which is included in this RFQ. The TO will be adjusted according to the award of the Work. The anticipated Term of the work will begin in October 2024 with all work to be completed by March 31, 2025.

The Work will be awarded by **Unit** and in the manner that best serves the District to ensure completion of the specified services within the specified timeframe. Unit pricing will be the primary factor that determines how the Work will be awarded but is not the sole factor. At its sole discretion, the District may elect to not award all Units and may negotiate pricing with companies submitting quotes.

SUBMITTING QUOTES

- Please send quote via email **by 2:00 pm ET on July 17, 2024**.
- Companies are not required to quote all Work Groups.
- Companies not submitting a quote for any of the Work Groups must submit a “No Quote” response.
- Submit Quotes on the attached one-page Quote Sheet to Benjamin.Faure@nwfwater.com
Quote Sheet must be returned as a pdf.

QUOTE SHEET
NWFWMD RECOVERY EFFORTS AND DEBRIS REDUCTION CLEARANCE SERVICES

DEBRIS REDUCTION AND REMOVAL

Submit this sheet to: Benjamin.Faure@nwfwater.com by 2:00 PM ET, July 17, 2024. Quotes received after the above deadline will be rejected.

Company:						
Quote Prepared by:						
Date:						

Unit #	Work Unit	Contract Acres	Existing Vegetation	Work Operation	Per Acre Rate	Unit Total
1	Beaverdam Creek Unit	26	Mixed Hardwoods and Pine	Debris Reduction/Mulching-Preserve Residual Trees	\$ -	\$ -
2	St. Andrews Unit	60	Mixed Hardwoods and Pine	Debris Reduction/Mulching-Preserve Residual Trees	\$ -	\$ -
3	County Line Rd. Unit	27	Mixed Hardwoods & Pines	Debris Reduction/Mulching-Preserve Residual Trees	\$ -	\$ -
4	Howard Swamp Unit	36	Dead Standing and Downed Trees	Debris Removal Per Draft Task Order Instructions	\$ -	\$ -
5	Gully Pond Unit	84	Dead Standing and Downed Trees	Debris Removal Per Draft Task Order Instructions	\$ -	\$ -
6	Hammock Pond Unit	209	Dead Standing and Downed Trees	Debris Removal Per Draft Task Order Instructions	\$ -	\$ -
7	Rattlesnake Lake Unit	93	Dead Standing and Downed Trees	Debris Removal Per Draft Task Order Instructions	\$ -	\$ -
8	Jelk Tract Unit	18	Mixed Hardwood and Pines	Debris Reduction/Mulching-Preserve Residual Trees	\$ -	\$ -
9	Econfina Fireline Units	150	Mixed Hardwood and Pines	Debris Reduction- Per Draft Task Order Instructions	\$ -	\$ -
Authorized Signature:						\$ -

Assuming your company receives a Task Order and Notice to Proceed by October 15, 2024 Enter the number of acres this company can complete by March 31, 2025	
---	--

The award of task orders for the work outlined in this Request for Quotes is subject to approval of the District's budget.

Draft Task Order

(Final Task Order acreages and Contractor Group assignments will be adjusted according to the award of the Work)

NORTHWEST FLORIDA WATER MANAGEMENT DISTRICT

CONTRACTUAL SERVICES FOR DEBRIS REDUCTION CLEARANCE SERVICES
BY PRE-QUALIFIED VENDORS AWARDED CONTRACTS VIA
REQUEST FOR PROPOSAL 20-001

AGREEMENT No. 20-XXX;

TASK ORDER No. XX

EXHIBIT A - SCOPE OF SERVICES

General Description and Location

This Task Order (TO) is for debris reduction/mulching and/or debris removal services on nine units totaling approximately 703 acres, to be completed by **March 31, 2025**. Unit 1 is located in Liberty County within the Apalachicola River Water Management Area and Units 2-9 are located in Bay, Jackson and Washington counties within the Econfina Creek Water Management Area.

The Work Groups have been identified and delineated on the attached Exhibit Maps. The Work Groups will be reviewed by the CONTRACTOR and agreed upon prior to the operations with assistance from the DISTRICT. All Work is to be conducted in accordance with NFWFMD Agreements issued as the result of RFP 20-001, and any additional schedules and specifications contained in the TO.

The objectives for the Debris Reduction Work Groups are to reduce debris and to reduce wildfire fuel accumulation and safety hazards without damaging residual trees and facilities. Contractors are encouraged, but not required, to utilize vegetation for fiber production, fuelwood, or other beneficial uses.

The objectives for the Debris Removal Work Groups are to remove a significant amount of dead standing and downed timber and understory vegetation from the units, and haul away or pile burn the vegetative debris.

The objectives for the Econfina Fireline Unit (unit 9) is to remove all standing live and dead trees and understory vegetation within 50 feet from the identified boundary lines to provide a firebreak for wildfire hazard mitigation.

Note: some Units may have a combination of debris removal and debris reduction work operations.

Contact Persons

The District's contact persons are:

Coakley Taylor (Site Manager Units 1-2) who can be reached at 850-722-9919 (office) 850-272-2737 (cell) and email at Coakley.Taylor@nwfwater.com

Eric Toole (Site Manager Units 3-9) who can be reached at 850-722-9919 (office) 850-726-0385 (cell) and email at Eric.Toole@nwfwater.com

Benjamin Faure (Project Manager) who can be reached at 850-722-9919 (office), 850-510-0399 (cell/text), or via email at Benjamin.faure@nwfwater.com

Carol Bert (Contract Manager) who can be reached at 850-539-5999 (office switchboard), 850-539-2634 (office direct), or via email at Carol.Bert@nwfwater.com

Hunting/Public Use Information

District lands are open to public use year-round, including hunting. Contractors must be aware of public users and plan and execute their Work accordingly. Sites with public recreation amenities may be closed to protect public safety. Placement of signage before and during the Work is allowed and encouraged. Hunting seasons, quota hunt dates, and other information and regulations can be found online at: <http://myfwc.com/hunting/wma-brochures>

Work Completed and Billing

The District anticipates monthly billing with measured stages of completion, based upon acres completed by the Contractor. Acreage where debris has been completely reduced/removed in accordance with the specifications Contained in Table 1 and Work Operation Instructions and Methods will be considered 100 percent complete. Acreage where debris has been piled, but not reduced or removed according to the specifications will be considered 50 percent complete. After the Contractor has notified the District that a Unit (or portion of a Unit) is complete, District field staff will inspect the Unit for contract compliance. Only those acres within the unit determined to meet debris clearance and reduction/removal goals as specified will be authorized for billing and payment. The District staff will map the area(s), measure and quantify the acres mulched and debris reduced/removed. The Contractor will provide invoices based on this measurement. The District may also employ the use of aerial drone photography and/or video to document the Work progress and completion.

The Vegetative Debris Management Costs Per Acre provided by the Contractor shall be inclusive of all costs affiliated with completing the Work, including but not limited to employee pay, benefit costs, insurance, bonds, fuel, vehicles, transportation, mobilization and demobilization,

equipment, communication equipment, GPS units, cameras, PPE, power tools, hand tools, and any other costs necessary for the contractor to meet project specifications. Any needed fireline preparation and rehabilitation and all planning, permitting, administrative, contract management, and invoicing costs are included.

Task Order Performance Bond

The Contractor shall provide a Task Order Performance Bond in the amount of ten percent (10%) of the Task Order amount to be held by the District to insure contract compliance and to pay any damages sustained by the District due to the Contractor's negligence or breach of contract. A Notice to Proceed shall be issued for the TO Work only after the District has received the Contractor's Task Order Performance Bond and other required paperwork. Task Order Performance Bonds provided by a check will be deposited and the amount will be returned to the Contractor within 30 days of successful completion of all terms and conditions of the TO.

SCOPE OF WORK

(The Scope of Work below will be adapted to and included in each Task Order issued for the Work Groups contained in this RFQ).

Background

Hurricane Michael severely impacted District-owned land within the Econfina Creek Water Management Area in Bay, Jackson & Washington Counties, the Chipola River Water Management Area in Jackson and Calhoun Counties, and the Apalachicola River Water Management Area in Liberty County. The District has identified approximately 704 acres that currently require hurricane debris management and recovery services. The Work Groups are illustrated on the attached General Location and Exhibit Maps at the end of this Task Order.

Description of Work

- A. For Work Groups with the Work Operation specified as **"Debris Reduction"** or **"Debris Reduction/Mulching"** in Table 1, (Units 1, 2, 3, and 8), the Contractor shall remove from the project area:
- All downed trees ;
 - All standing dead trees including all standing stems broken off above the base);
 - All standing live trees that are leaning more than 25 degrees from vertical.
 - All standing Laurel Oak, Water Oak and Sweetgum up to 15" (fifteen inches) in diameter at breast height
 - Reduce all other shrubby and grassy vegetation to ground level

- B. For Work Groups with the Work Operation specified as “**Debris Removal**” in Table 1, (Units 4,5,6,7 and 9), the Contractor shall remove the debris from the unit or pile burn the debris as outlined in the specified Instructions on Table 1.

ALL WORK MUST BE COMPLETED BY March 31, 2025.

Table 1- Work Group, Contract Acres and Work Operation Instructions

Work Group (Name & Unit #)	Contract Acres	Existing Vegetation	Work Operation Instructions
Beaverdam Creek (Unit 1)	26 Acres	Mixed Hardwood & Pine	<u>Debris Reduction</u>
St. Andrews (Unit 2)	60 Acres	Mixed Hardwood & Pine	<u>Debris Reduction/Mulching-</u> Note due to varied terrain in this unit, a maximum of 60 acres has been identified to be completed within a larger polygon. Please coordinate with Site Manager to ensure work does not exceed Task Order Acreage.
County Line Rd. (Unit 3)	27 Acres	Mixed Hardwood and Pine	<u>Debris Reduction</u> <u>(Mulching/Mowing)-</u> Preserve native grasses (groundcover)
Howard Swamp (Unit 4)	36 Acres	Dead Standing and Downed Trees. Pine Flatwoods- 40 year old slash pine with palmetto, gallberry, and titi understory	<u>Debris Removal-</u> Cut and Remove all Dead standing and downed trees . Cut stumps 6 inches or less above ground. Haul off all debris <u>or</u> pile and burn. Preserve Residual Live Trees. <u>LOW GROUND PRESSURE EQUIPMENT REQUIRED.</u>
Gully Pond (Unit 5)	84 Acres	Dead Standing and Downed Trees.	<u>Debris Removal-</u> Cut and Remove all Dead standing and downed trees . Cut stumps 6 inches or less above

		Pine Flatwoods- 40 year old sand pine with palmetto, gallberry, and titi understory	ground. Haul off all debris <u>or</u> pile and burn. Preserve Residual Live Trees. <u>LOW GROUND PRESSURE EQUIPMENT REQUIRED.</u>
Hammock Pond (Unit 6)	209 Acres	Dead Standing and Downed Trees. 30-Year-old partially thinned slash pine with saw palmetto, gallberry and titi understory	<u>Debris Removal-</u> Cut and Remove all Dead standing and downed trees . Cut stumps 6 inches or less above ground. Haul off all debris <u>or</u> pile and burn. Preserve Residual Live Trees. <u>LOW GROUND PRESSURE EQUIPMENT REQUIRED.</u>
Rattlesnake lake (Unit 7)	93 Acres	Dead Standing and Downed Trees. Mixed Hardwoods and Sand Pine and 30-Year-old partially thinned slash pine with saw palmetto, gallberry and titi understory	<u>Debris Removal-</u> Cut and Remove all Dead standing and downed trees . Cut stumps 6 inches or less above ground. Haul off all debris <u>or</u> pile and burn. Preserve Residual Live Trees. <u>LOW GROUND PRESSURE EQUIPMENT REQUIRED.</u>
Jelk Tract Unit (Unit 8)	18 Acres	Mixed Hardwood and Pine	<u>Debris Reduction-</u> Mulching
Econfina Fireline Units (Unit 9)	150 Acres	Varies- Primarily Mixed Hardwoods and pines with some vegetative understories	Debris Reduction- Mulching Remove all standing live and dead trees within the project area, cut stumps 3" or less above ground. Mow or reduce all other remaining vegetation to ground level.

Methods

1) Debris Reduction/Mulching Units

- a) For all work groups (or portions thereof) identified as Debris **Reduction/Mulching** listed in Table 1 (Units 1, 2, 3, and 8), the Contractor will select the most efficient method or combination of methods for removing the trees and vegetative debris, including such techniques as cut and haul to an approved disposal or reuse facility; onsite air curtain incineration; pile and burn in areas that will not affect residual trees, onsite chipping with removal, onsite chipping/mulching with distribution of chips, etc.
- b) The Special Conditions listed below must be taken into consideration for any selected vegetative debris management method.

2) Debris Removal Units

- a) For all work groups (or portions thereof) identified as **Debris Removal** listed in Table 1 (Unit 4, 5, 6, 7, and 9), the Contractor will select the most efficient method or combination of methods for removing the trees and vegetative debris as specified, including such techniques as cut and haul to an approved disposal or reuse facility; onsite air curtain incineration; pile and burn in areas that will not affect residual trees. Onsite mulching and spreading of chips is not permitted in these units except for mowing of smaller shrubs and other herbaceous vegetation.

3) Low Ground Pressure Equipment Required

- a). Units 4, 5, 6, and 7 are located within wet flatwoods natural communities which are seasonally saturated, depending on rainfall accumulations. These units will require the use of equipment with low ground pressure to avoid rutting or damaging of soils and are best accessed from October through March during drier periods. The District retains the right to shut down the Work in inclement weather if damage to the unit is deemed by the Project Manager to be too severe.

Special Conditions- All Work Groups:

1. All of the debris reduction/removal groups may contain wetlands, steep slopes, floodplain areas, creek banks, wet areas, streams, ponds, and karst features (hereinafter referred to as "Sensitive Areas") that are not specifically mapped or excluded from the Work Group maps. Because precise mapping of the Sensitive Areas is very difficult, the Work Groups have been delineated in a manner that includes Sensitive Areas. Conventional equipment used to perform debris cleanup would likely cause unacceptable impacts to these areas

without the use of specialized materials and techniques. **Sensitive Areas shall not be impacted by the Work.** The Contractor has the option of performing debris cleanup or removal within Sensitive Areas in a manner that does not impact the Sensitive Areas, or the Contractor may elect to not perform debris cleanup within Sensitive Areas. The acreage of Sensitive Areas not receiving debris cleanup services will be excluded from invoicing.

2. Karst features (sinkholes, crevasses, exposed limerock, etc.) may be present within the Work Groups and shall be protected during all operations. Debris shall be removed around and within these features using methods that do not result in damage to the karst features.
3. The Contractor shall coordinate closely with the District's Site Manager when working close to the boundaries of the Work Group to ensure all Work is conducted on District land and no impacts occur on adjacent private lands as a result of the Work.
4. If access to any part of the Work Group is across private land, the Contractor shall be responsible to the private landowner concerning such access and shall conduct any repairs or remediation needed on the private lands.
5. The Contractor must take care not to damage fences, overhead and underground utilities, gates, and any other items of value owned by the District or neighboring property owners. Contractor will be held responsible for all damages.
6. The Contractor shall not bury onsite any debris, garbage, trash, or other materials resulting from or associated with the Work. Ash from burning operations may remain onsite, provided that it is not in piles or disposed of in a manner that would prevent vegetation from growing.
7. Work will occur only during daylight hours, unless otherwise approved by District.
8. The Work area is located on public lands within the Econfina Creek WMA. The Contractor shall be responsible for posting appropriate construction site closure and "No Trespassing" signs at appropriate locations within the Work areas as needed, which shall be removed after completion of the Work. The Contractor may utilize existing District gates and may place temporary gates, fences and/or barricades, if needed. Contractor may place their own padlocks on District gate(s) and shall ensure that the District's locks and the locks of other authorized users on the gates remain functional for access by District staff and other authorized users. The Contractor shall be responsible for all site and equipment security. Trespassing, theft, vandalism and other illegal activities shall be immediately reported to local law enforcement authorities.

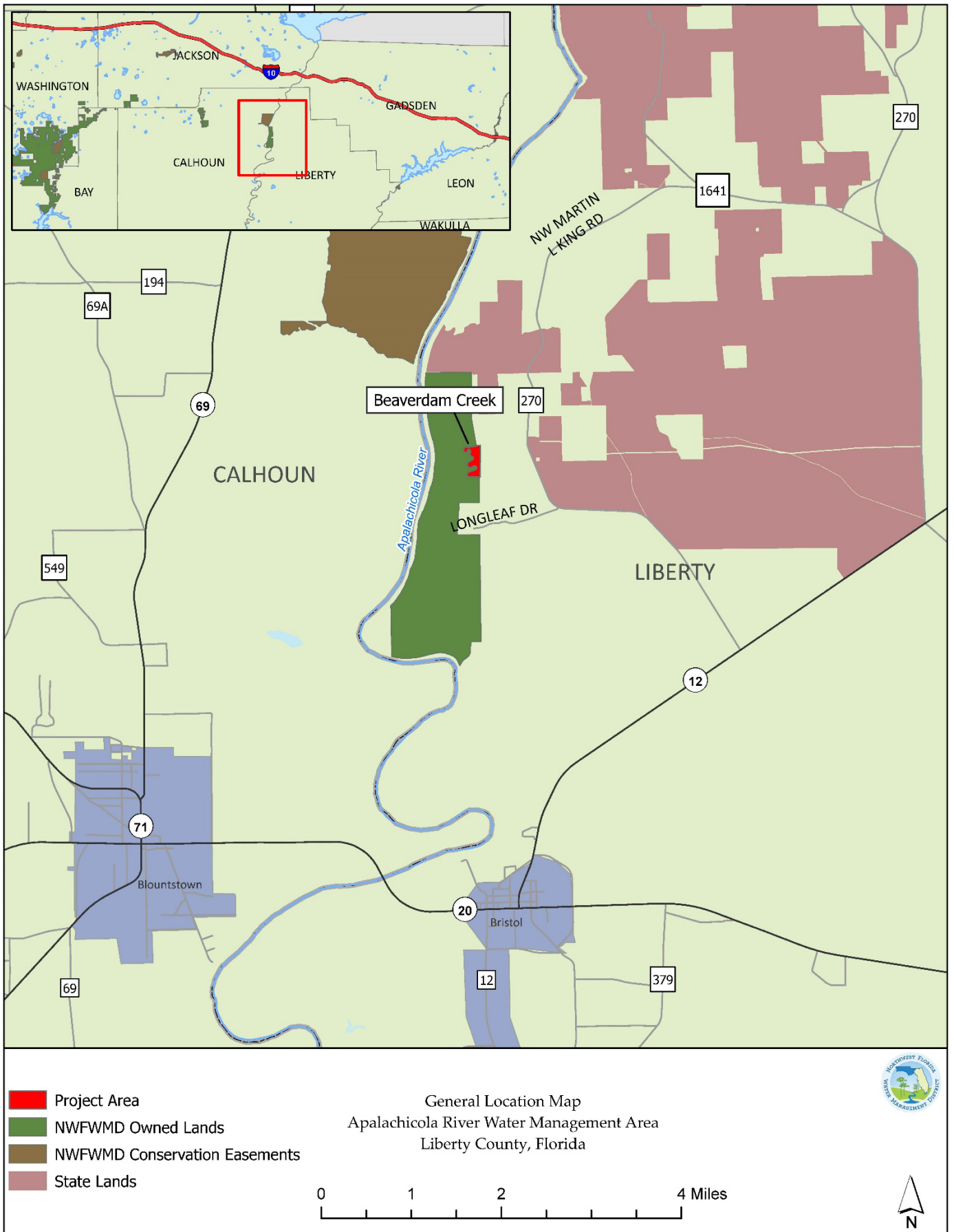
9. The Contractor must exercise care to prevent damage to all residual live trees located within the project areas not specified for removal. Special care shall be given to prevent any damage to any trees not designated for removal by the District. Standing trees not intended for removal will not be used in any manner to facilitate the Contractor's operations.
10. Debris remaining onsite shall not be piled nor left gathered around or near the base of remaining live trees.
11. Stumps from vertical dead and leaning trees shall be cut as close to the ground as possible and shall not be higher than 3 inches (3") above the ground except where otherwise authorized by the District. Felled trees with root balls attached shall be cut as close to the root ball as possible.
12. All "lodged" trees shall be freed and removed.
13. The District retains the right to close down operations in inclement weather if soil disturbance in the project area or damage to roads is deemed by the District to be too severe.
14. The Contractor shall adhere to and implement all applicable federal, state, and local environmental laws and regulations as well as applicable best management practices (BMPs) for silvicultural operations as outlined in the latest version of the Florida Silviculture Best Management Practices Manual. The Contractor is responsible for securing any forestry authorizations that may be required under Chapter 40A-44, Florida Administrative Code, and/or any other local, state, or federal permit or authorization that may be required to conduct the vegetation and debris removal operations and shall remain in full compliance with all governing regulations during the course of the Work. All burning operations shall be managed by a burn manager certified by the Florida Forest Service, shall be authorized as certified burns by the Florida Forest Service and shall be performed in accordance with Chapter 590, Florida Statutes and Chapters 62-256 and 51-2, FAC.
15. The Contractor shall accept roads in their present condition and accept responsibility and expenses for any improvements in roads necessary to cut, haul, manage, and/or remove the designated vegetation. During operations the Contractor shall maintain all roads in a usable condition, suitable for the vehicular traffic to which the road is normally subjected. The Contractor is solely responsible for maintaining the roads and making them serviceable prior to use, as approved by the District. Ruts on roads will be back bladed by the Contractor upon completion of the Work and when requested by the District during

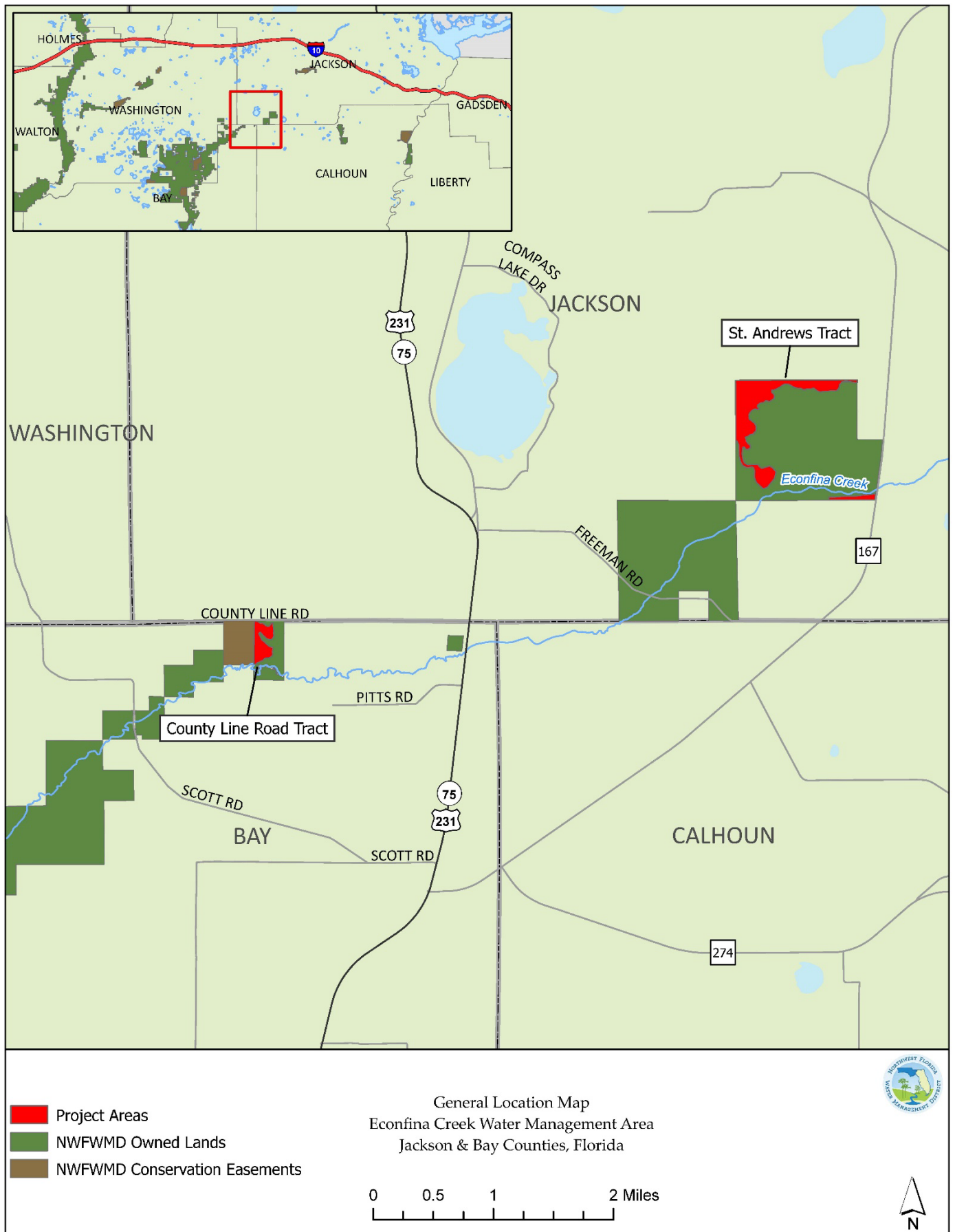
the Work. The District retains the right to close down the operations in inclement weather if damage to roads or the project area is deemed by the District as becoming too severe.

16. Maintenance of equipment may be conducted on-site only if all product containers, fluids and waste, including used oil, hydraulic oil and all other disposable products, are properly captured and contained, and removed from the site for proper disposal. Petroleum-based fluid spills smaller than 5 (five) gallons that occur from equipment must also be reported to the District, treated with appropriate absorbent and/or other neutralizing agent, and followed by removal and proper disposal of affected soils. Petroleum-based fluid spills 5 (five) gallons or greater in a concentrated spot shall be reported to the District and cleaned up properly. Spills that are 25 gallons or greater must be reported to the Florida Department of Environmental Protection (“DEP”) with a field inspection made by DEP, and the Contractor must handle such spills according to DEP instructions. ***Spills must not be buried with soil and/or sand and left untreated.*** Equipment that constantly leaks fluid and/or causes other problems on site shall be shut down by a District representative and the Contractor may be required to remove the problem equipment from the site.
17. The Contractor shall be responsible for seeing that the Work area shall remain free from any litter such as oil cans, drums, paper, foam products and other refuse.
18. The Contractor shall provide at least one portable toilet for use by its employees and subcontractors and shall ensure that the portable toilet is serviced on a weekly or more frequent basis.
19. To minimize the possibility of transporting and spreading exotic plant species, equipment must be thoroughly cleaned of all dirt and vegetative plant material prior to moving onto District land.
20. If warranted by the specific operations employed by the Contractor, the Contractor shall provide and maintain a minimum of two (2) signs stating: “Trucks Entering and Leaving Highway” (or similar acceptable language) and place the signs in appropriate locations.
21. Gopher tortoises are a protected species and may be present within the project areas and in other areas throughout the property. Work crews must prevent impacts to tortoises and their burrows by avoiding burrow aprons and tunnels and watching out for individual tortoises during all operations. Gopher tortoises shall not be injured, captured, moved or removed from District project areas.

DRAFT

General Location & Exhibit Maps





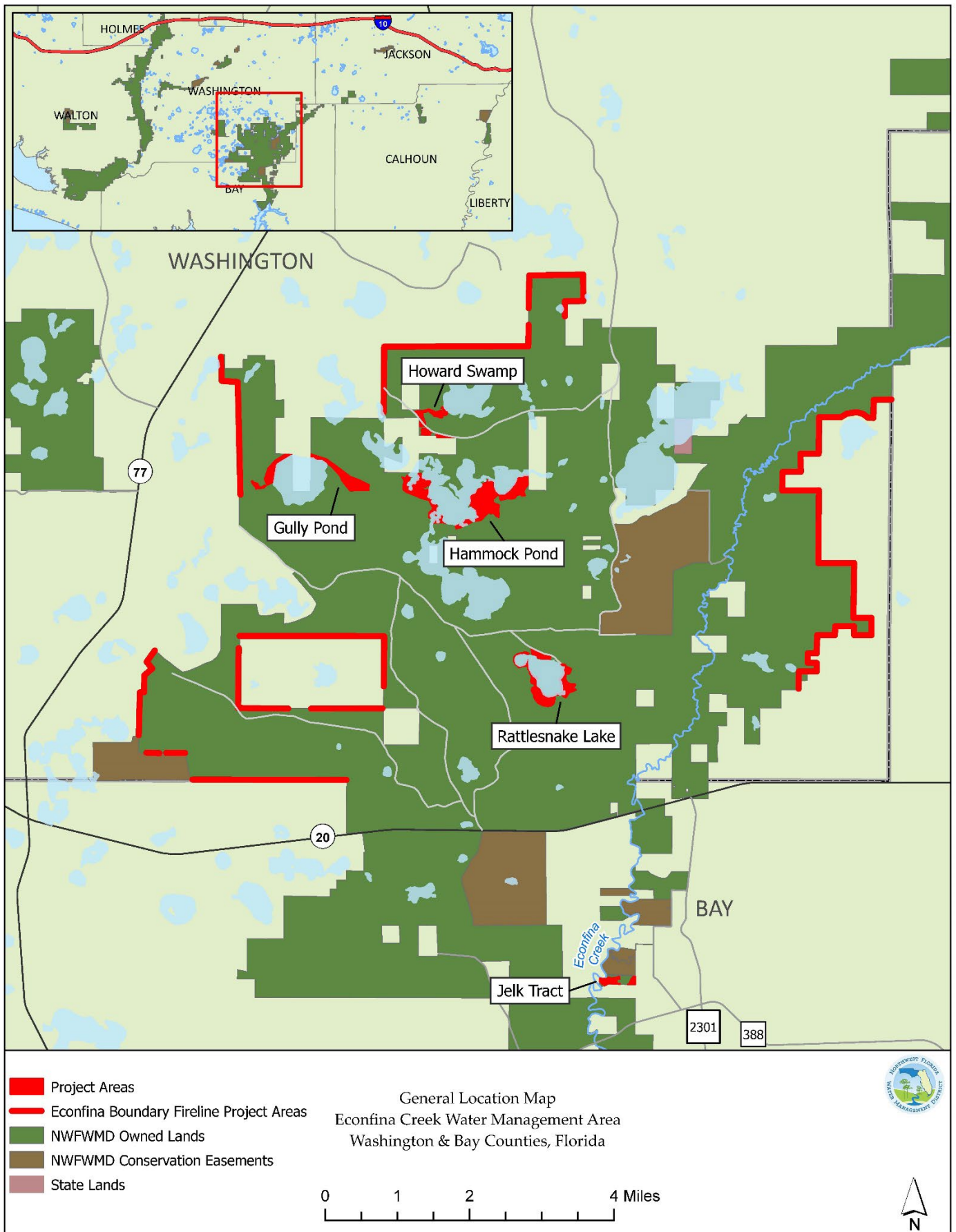
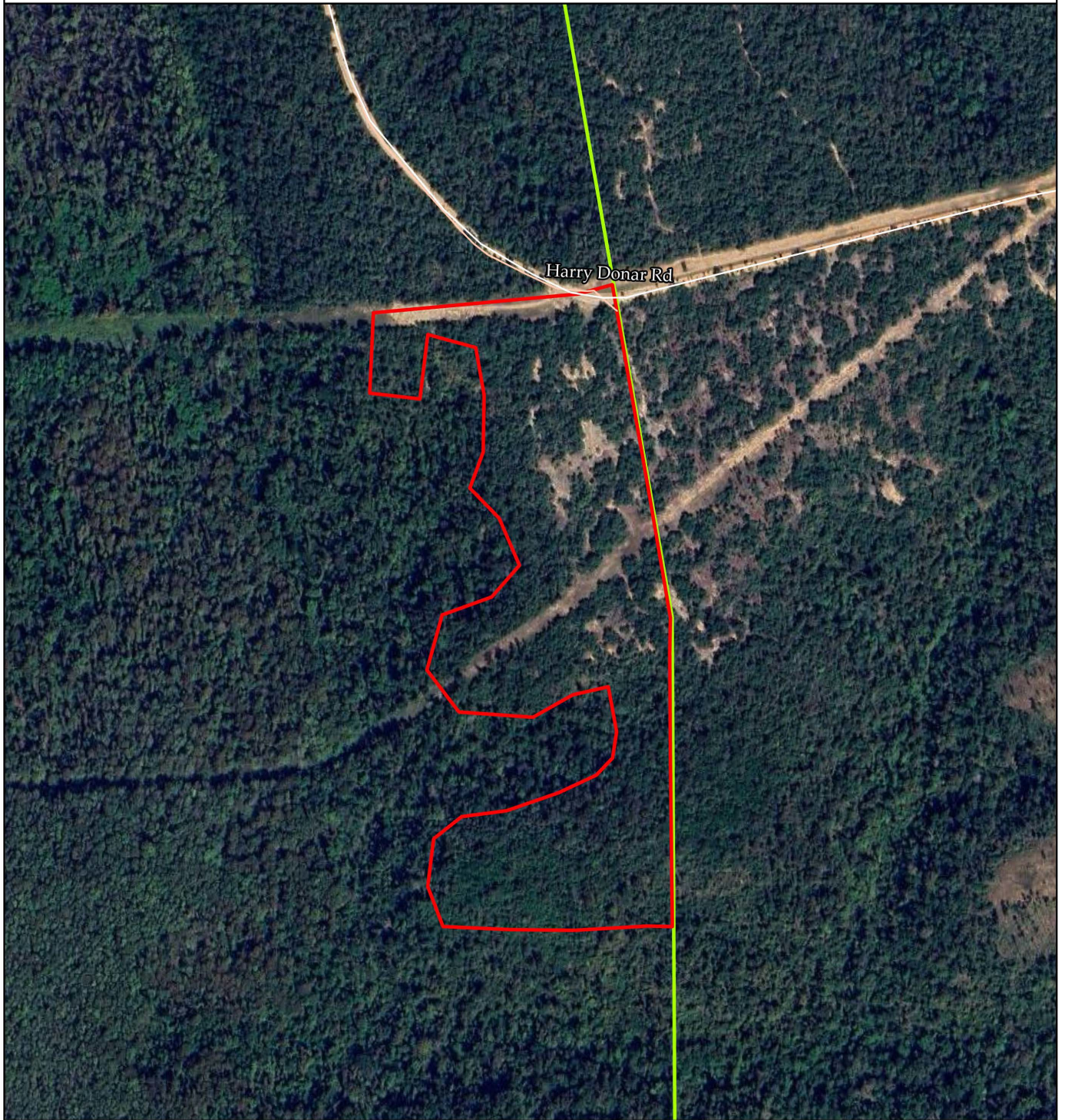


Exhibit Map



-  Beaverdam Creek Unit
-  NFWMD Owned Lands

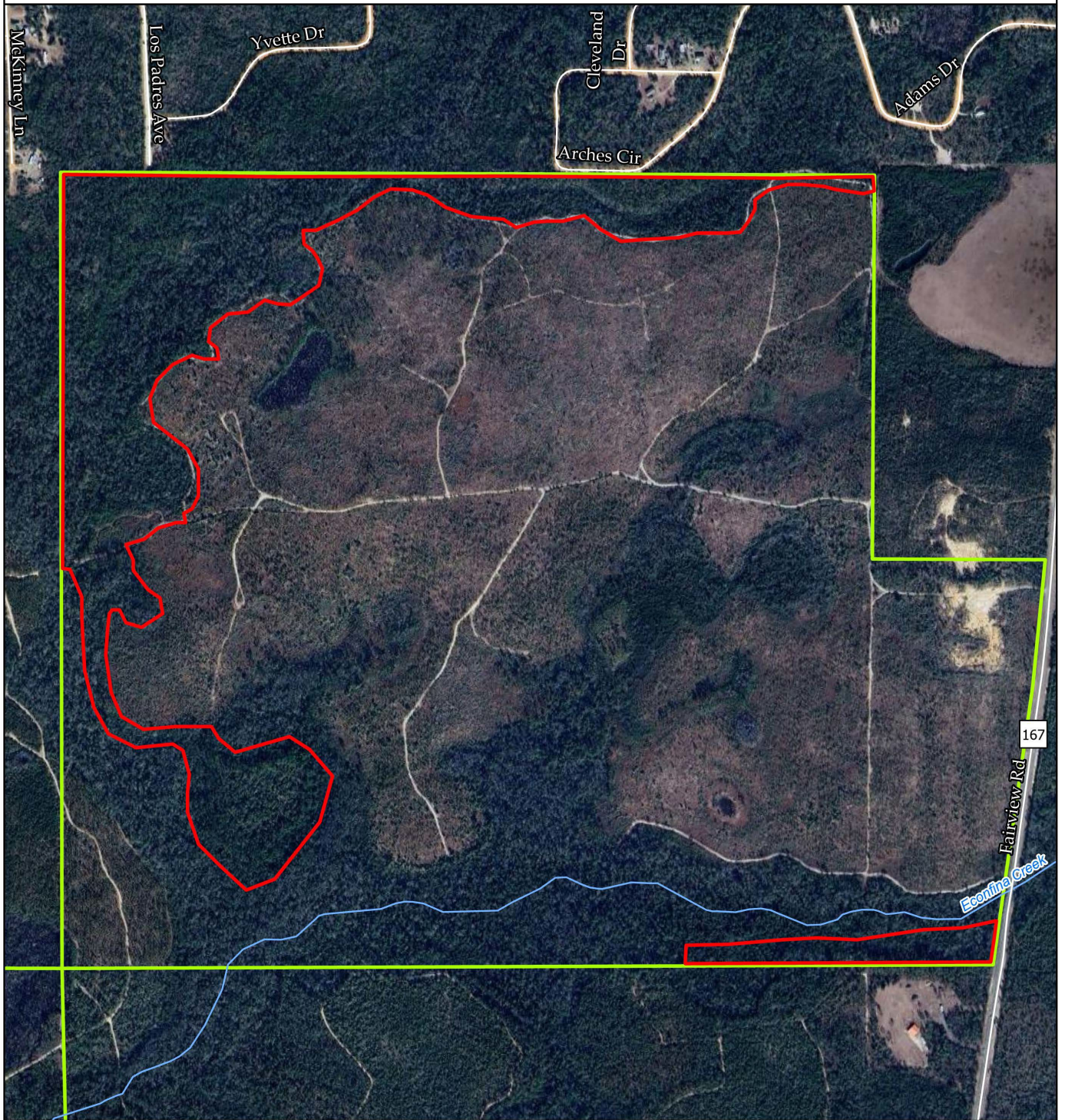
Beaverdam Creek Unit
Apalachicola River Water Management Area
Liberty County, Florida
26 Acres



0 250 500 1,000 Feet



Exhibit Map

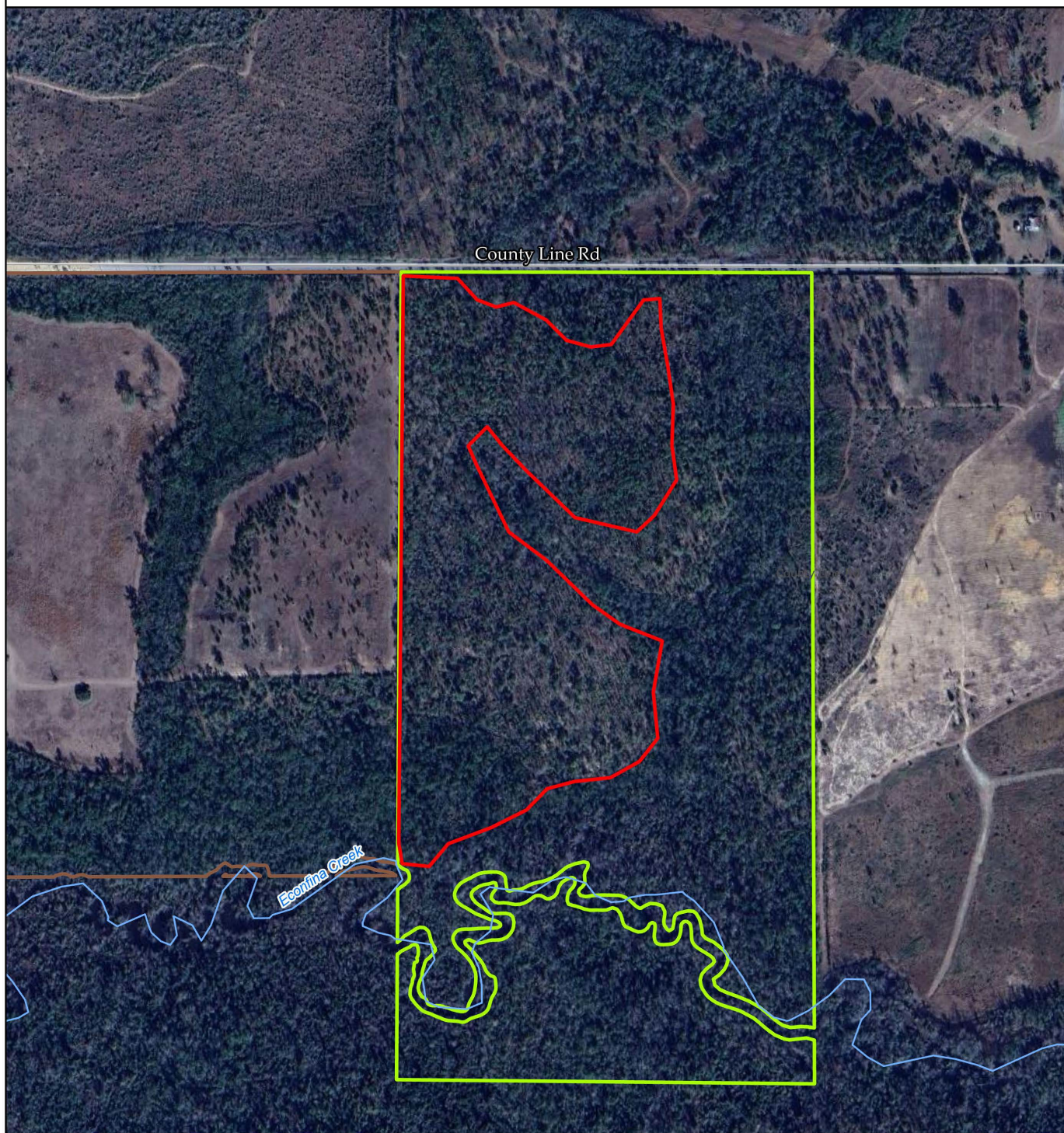


- St Andrews Unit
- NFWMD Owned Lands

St. Andrews Unit
Econfina Creek Water Management Area
Jackson County, Florida
60 Acres



Exhibit Map



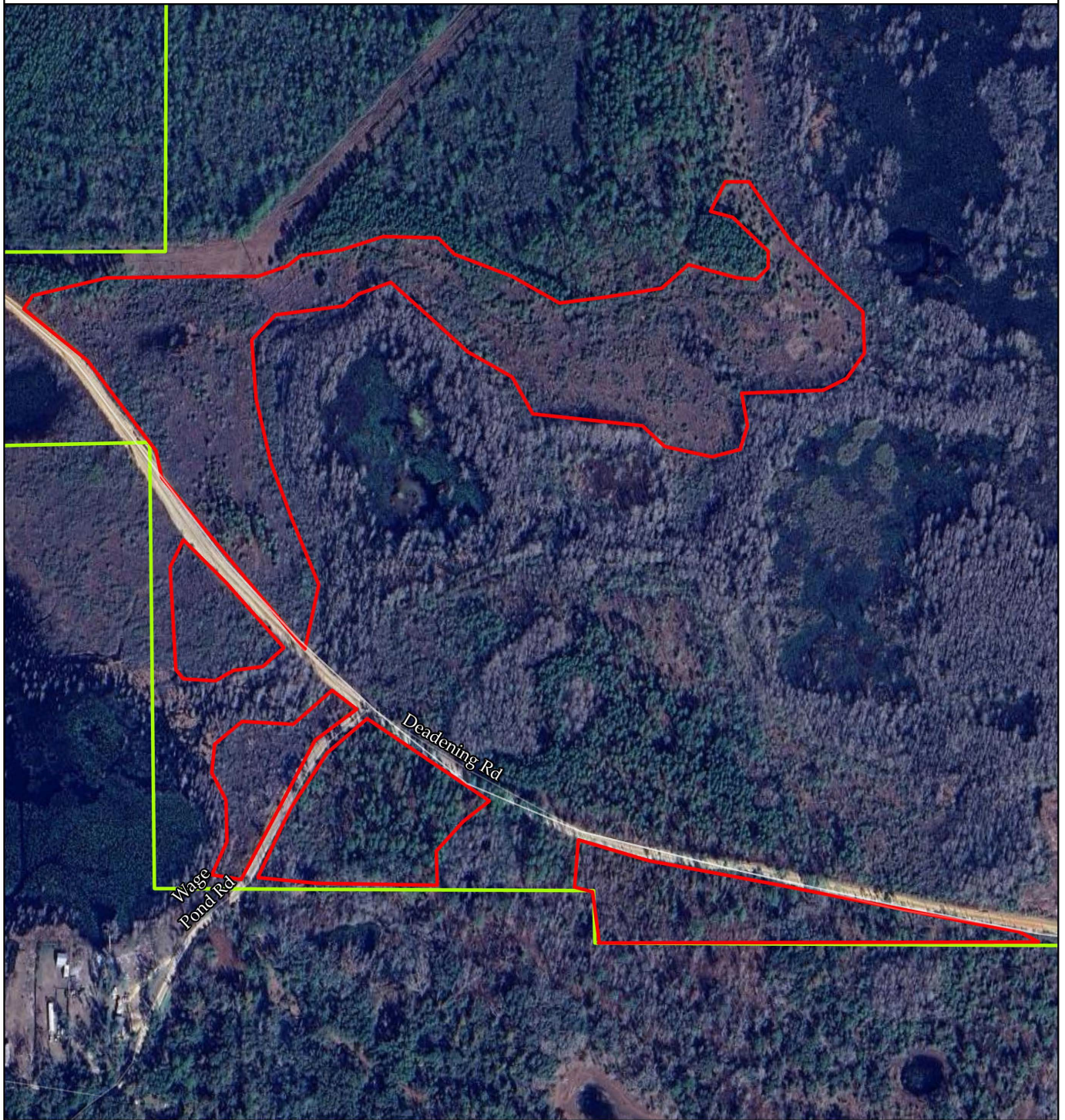
- County Line Rd. Unit
- NFWMD Owned Lands
- NFWMD Conservation Easements

County Line Road Unit
Econfina Creek Water Management Area
Bay County, Florida
27 Acres

0 250 500 1,000 Feet



Exhibit Map



- Howard Swamp Unit
- NFWMD Owned Lands

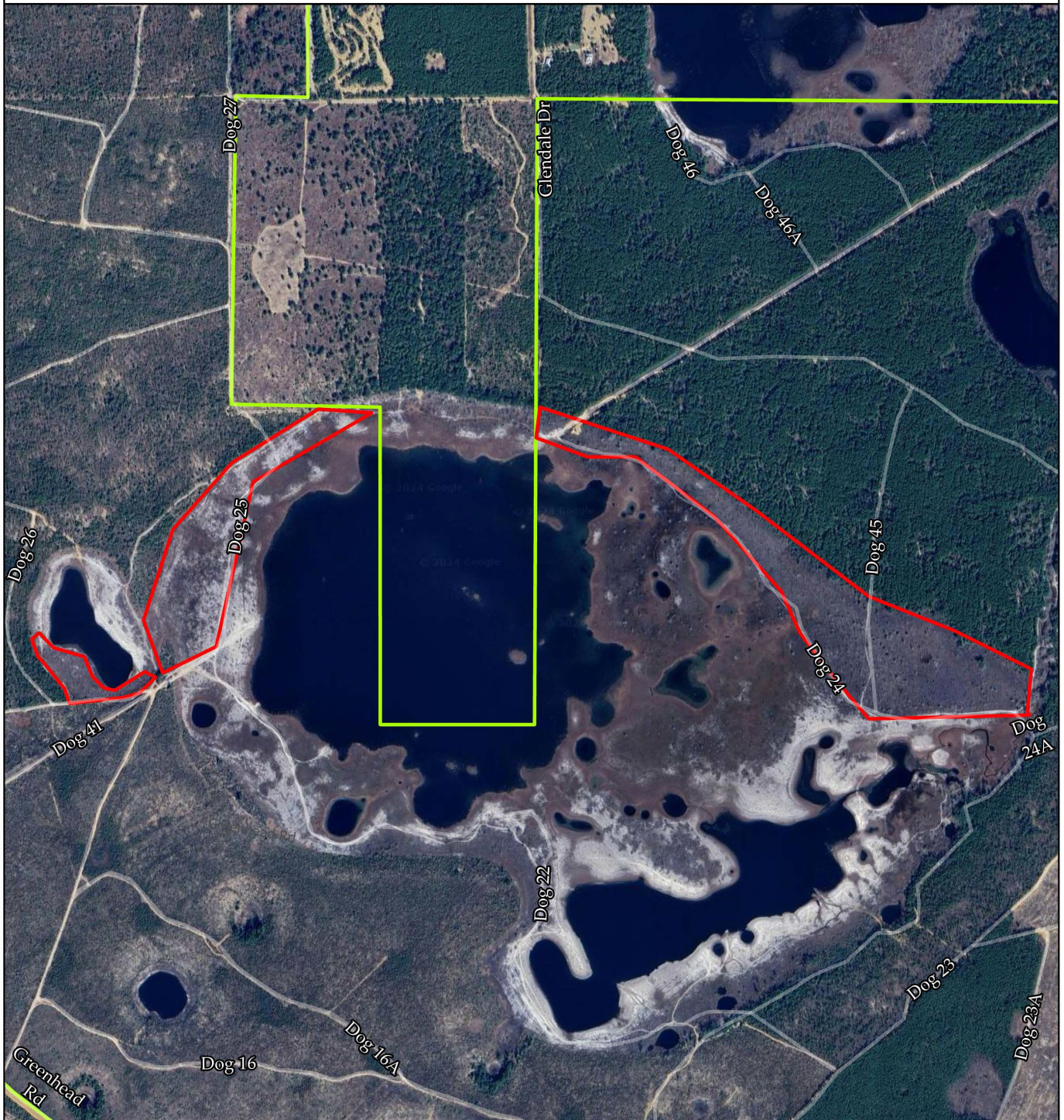
Howard Swamp Unit
Econfina Creek Water Management Area
Washington County, Florida
36 Acres



0 250 500 1,000 Feet



Exhibit Map



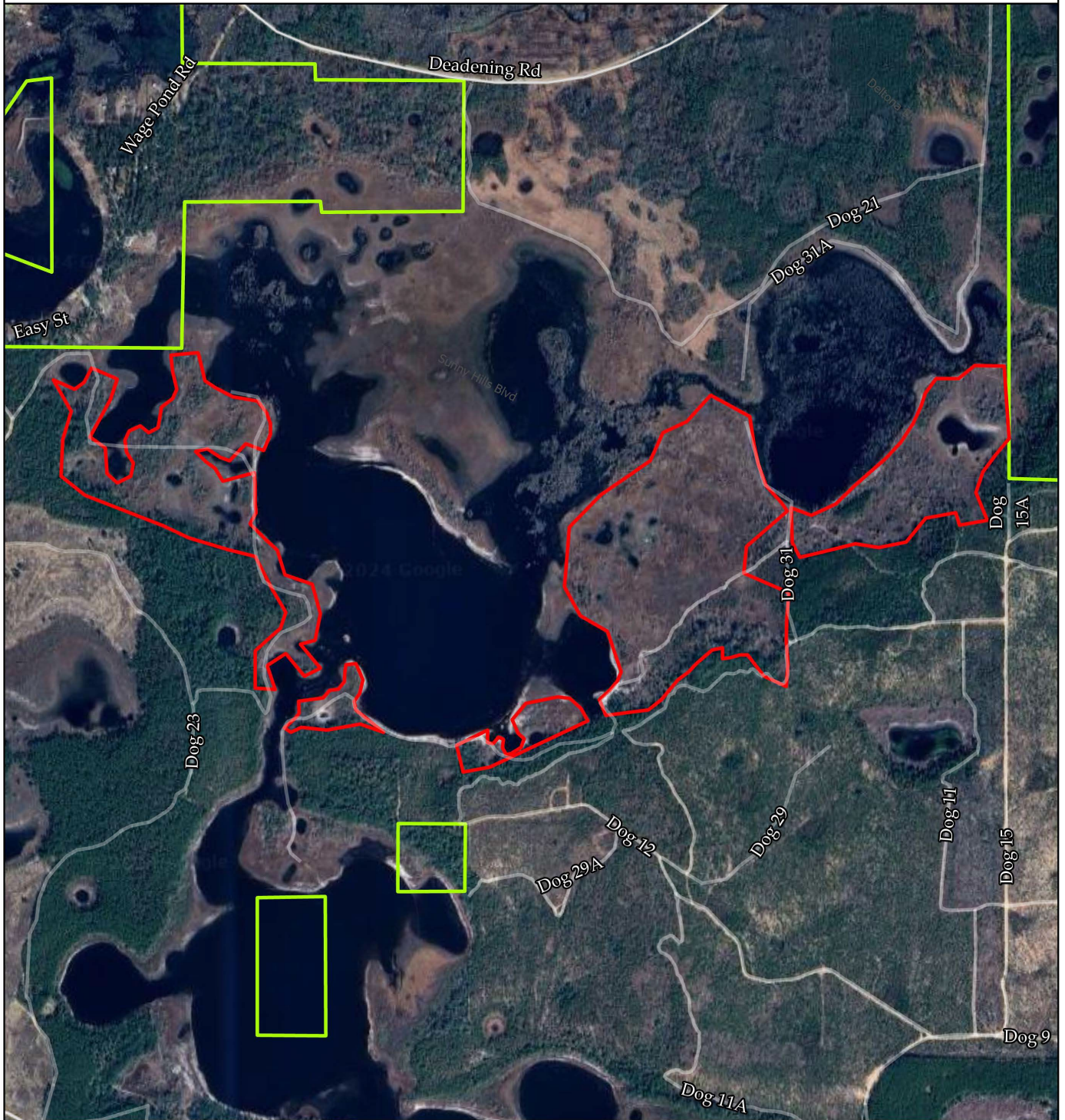
- Gully Pond Unit
- NFWMD Owned Lands

Gully Pond Unit
Econfina Creek Water Management Area
Washington County, Florida
84 Acres

0 500 1,000 2,000 Feet



Exhibit Map



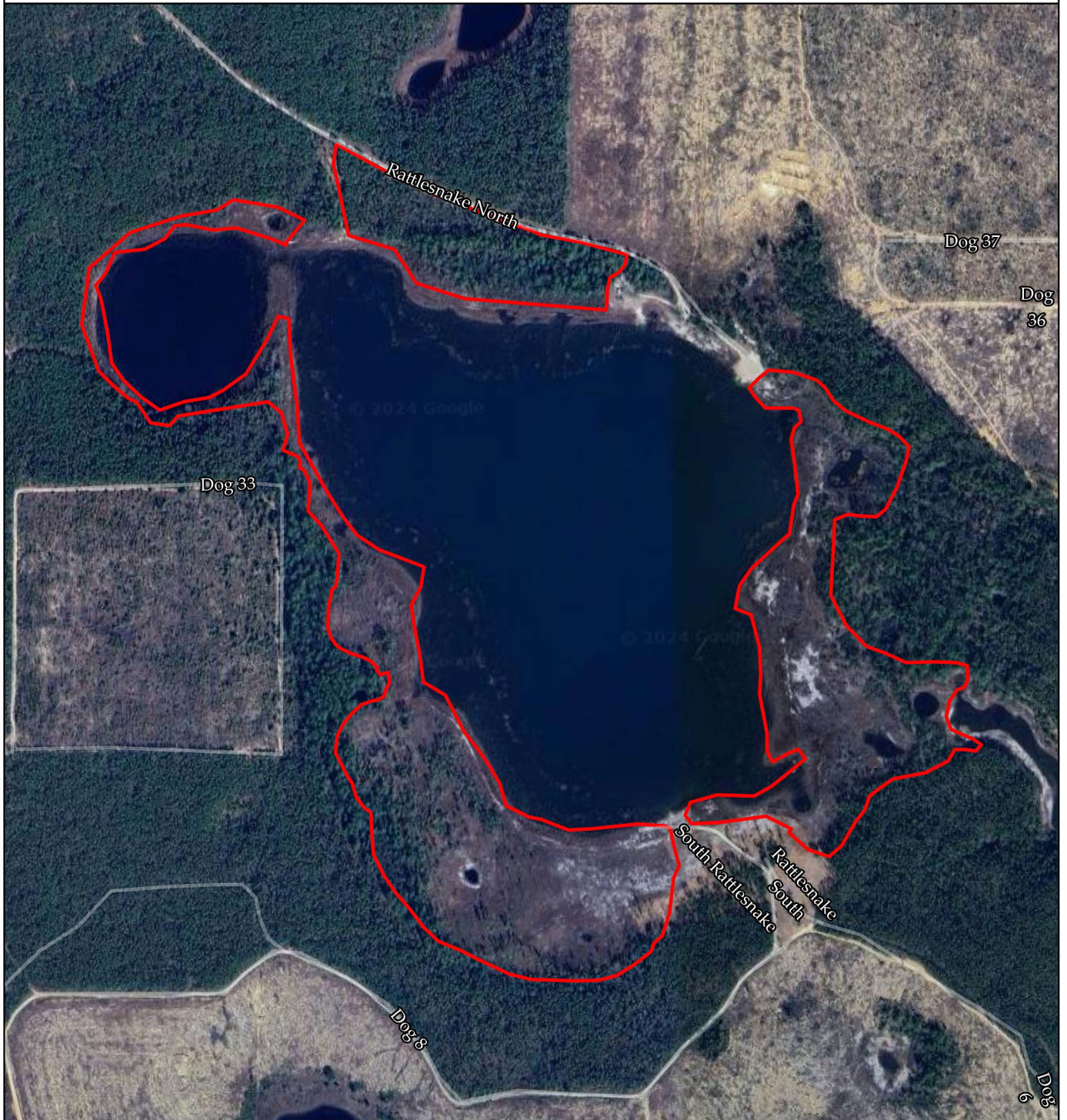
- ▭ Hammock Pond Unit
- ▭ NFWMD Owned Lands

Hammock Pond Unit
 Econfinia Creek Water Management Area
 Washington County, Florida
 209 Acres

0 500 1,000 2,000 Feet



Exhibit Map



 Rattlesnake Lake Unit

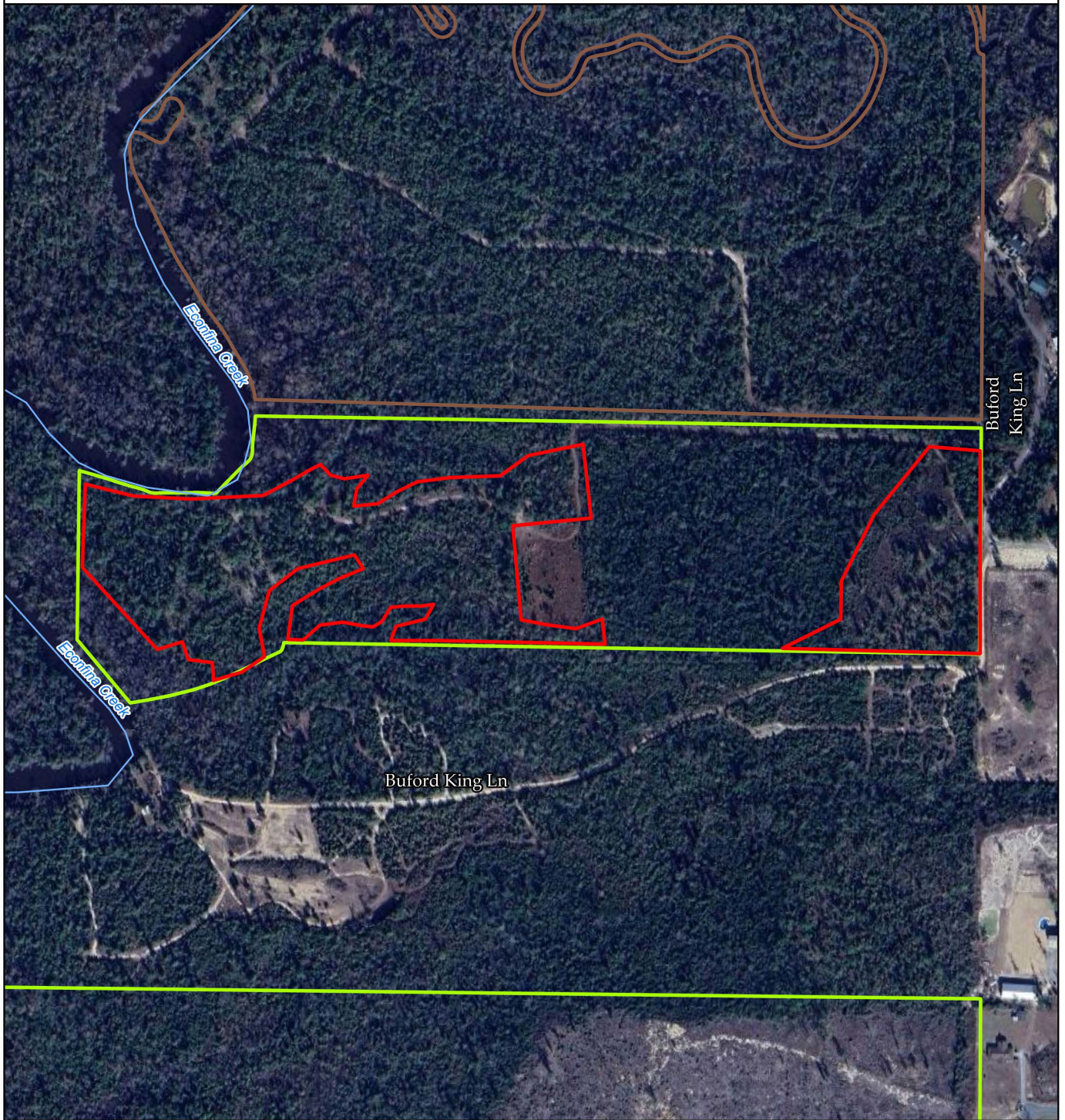
Rattlesnake Lake Unit
Econfina Creek Water Management Area
Washington County, Florida
93 Acres



0 500 1,000 2,000 Feet



Exhibit Map



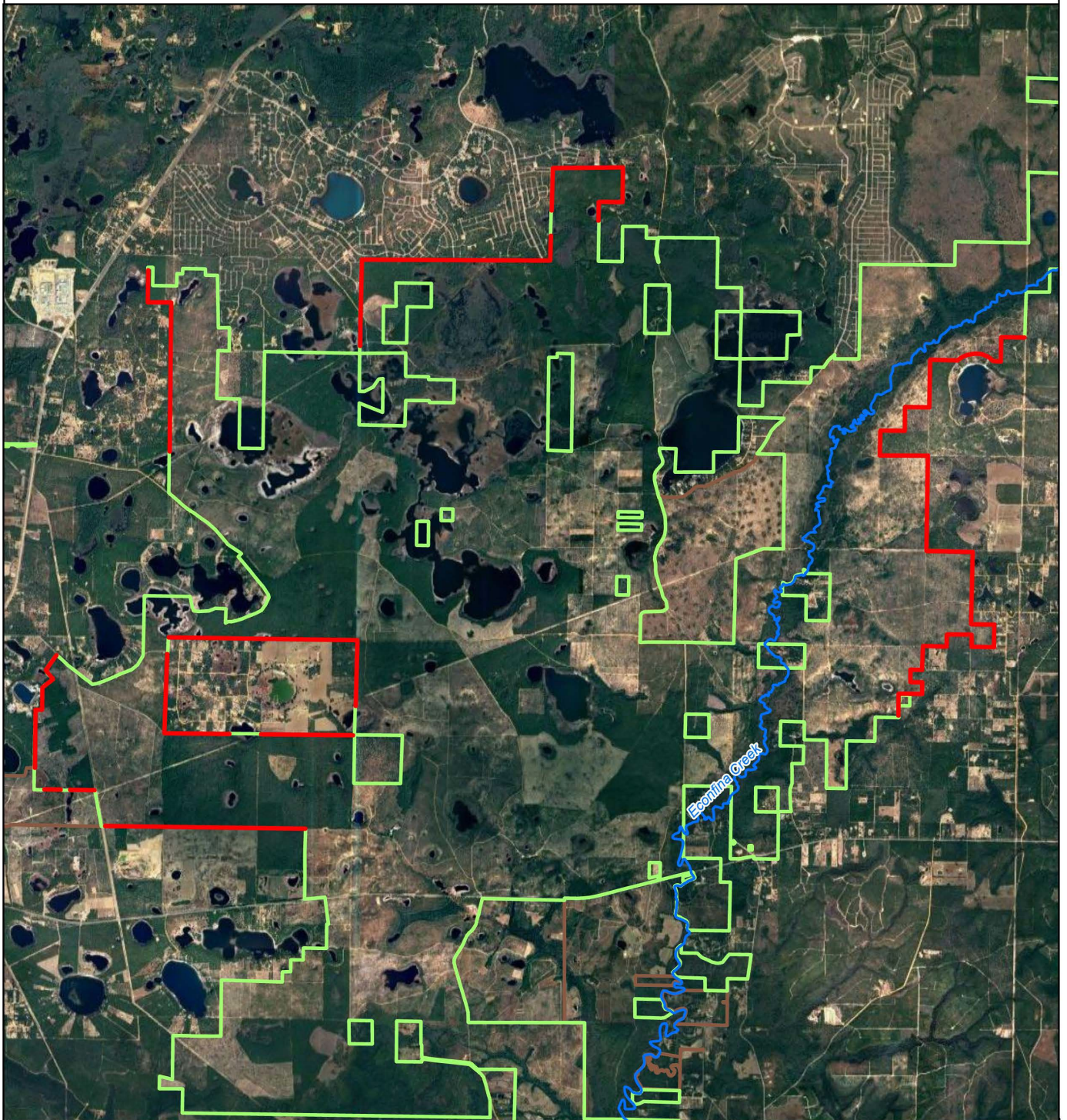
- Jelk Tract Unit
- NFWFMD Owned Lands
- NFWFMD Conservation Easements


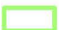

Jelk Tract Unit
Econfinia Creek Water Management Area
Bay County, Florida
18 Acres

0 250 500 1,000 Feet



Exhibit Map



-  Fireline Protection Areas
-  NFWFMD Owned Lands
-  NFWFMD Conservation Easements

Econfina Fireline Protection
Econfina Creek Water Management Area
Washington County, Florida
150 Acres

0 1 2 4 Miles

